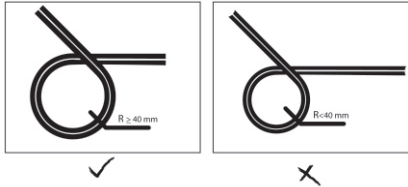




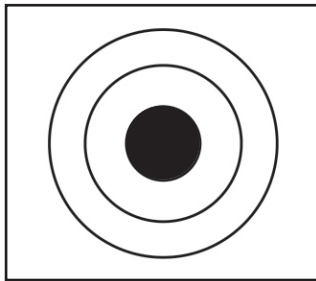
**PC 2000 SERIES
FIBER OPTIC PATCH CHORD**

August 2009

RIGHT BEND RADIUS



DUST PROTECTION



HANDLING OF FIBER JUMPER

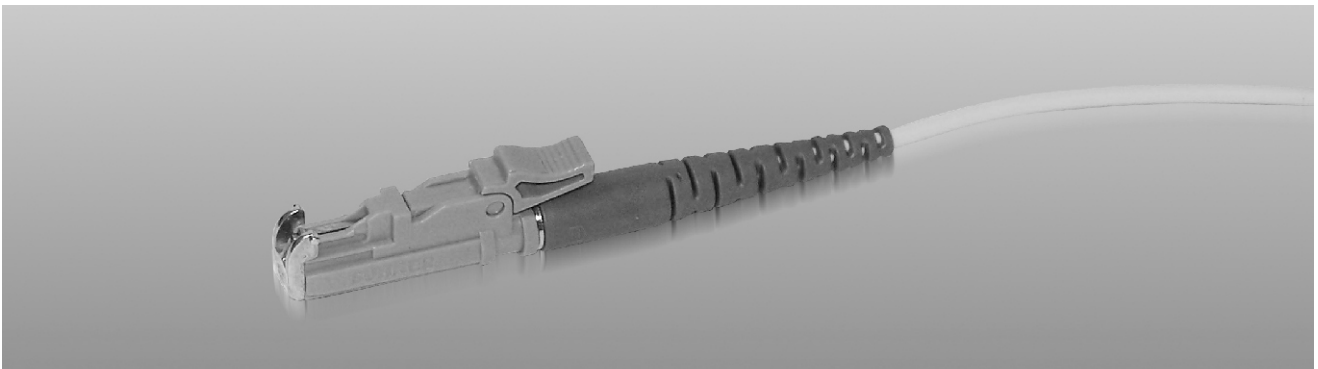
The Single mode and multimode optical fiber patch cord is supplied with dust cap at both ends to preserve the polished connector ends with dust cap when not in use.

SIMPLEX / DUPLEX

The optical fiber jumper cable should not be bent less than 40mm radius
Cleaning method of ferrule and fiber face
Use also propyl alcohol (Lab Grade) and lint free tissue to thoroughly clean the ferrule end and fiber face.

TEST REPORT

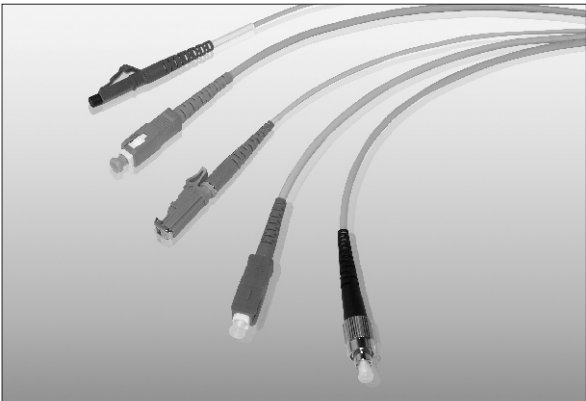
The single mode optical fiber patchcords are supplied with insertion loss less than (X) dB (+ fiber loss) per connector and with return loss better than or equal to (Y) dB. These values are mentioned in the test report found along with the jumper. Refer serial number for traceability.





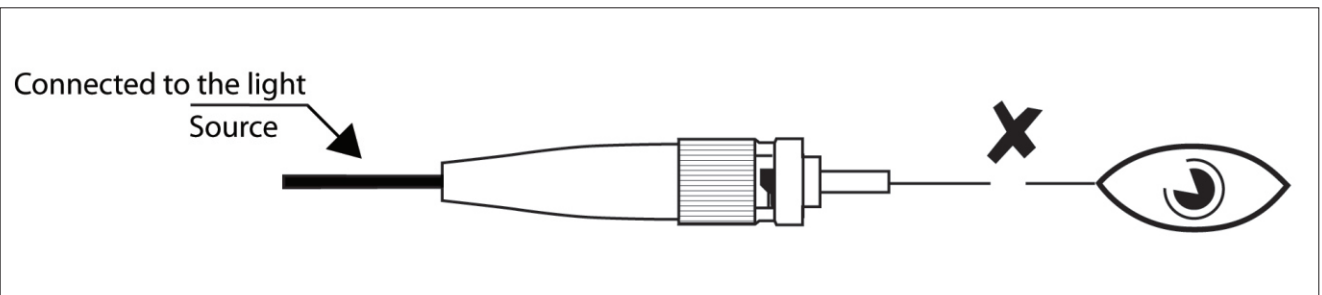
END FACE CRITERIA

Ensure end face is free from dust, scratches , pits and other defects using microscope prior to termination



SAFETY INSTRUCTIONS

Never look into the end of an optical fiber cable connected to an optical output device while under operation. Laser radiation is invisibile and direct exposure can cause damage to the eyes...



AFSPL/MKTG/08/09/01



Advanced Fiber Systems Pvt. Ltd.

137/2, Outer Ring Road
Banawadi, Kalyan Nagar Post
Bangalore-560 043

Phone: 91-80- 5459439
Email : sales@afspl.com
www.afspl.com